



GAT MONTHLY MEMBERSHIP PROGRESS REPORT

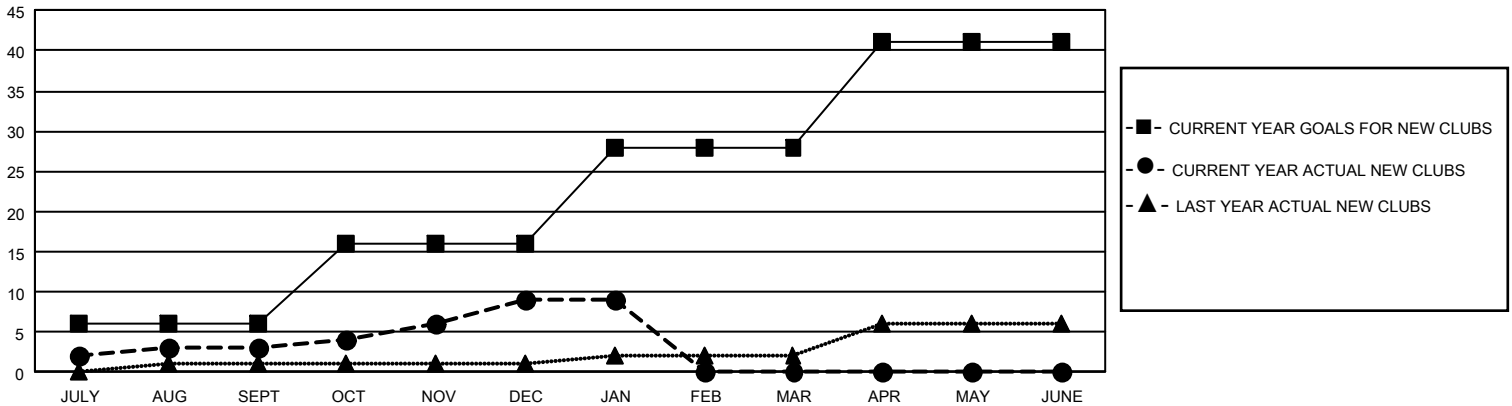
Results as of: 1/31/2021

GMT Constitutional Area 1, Group D

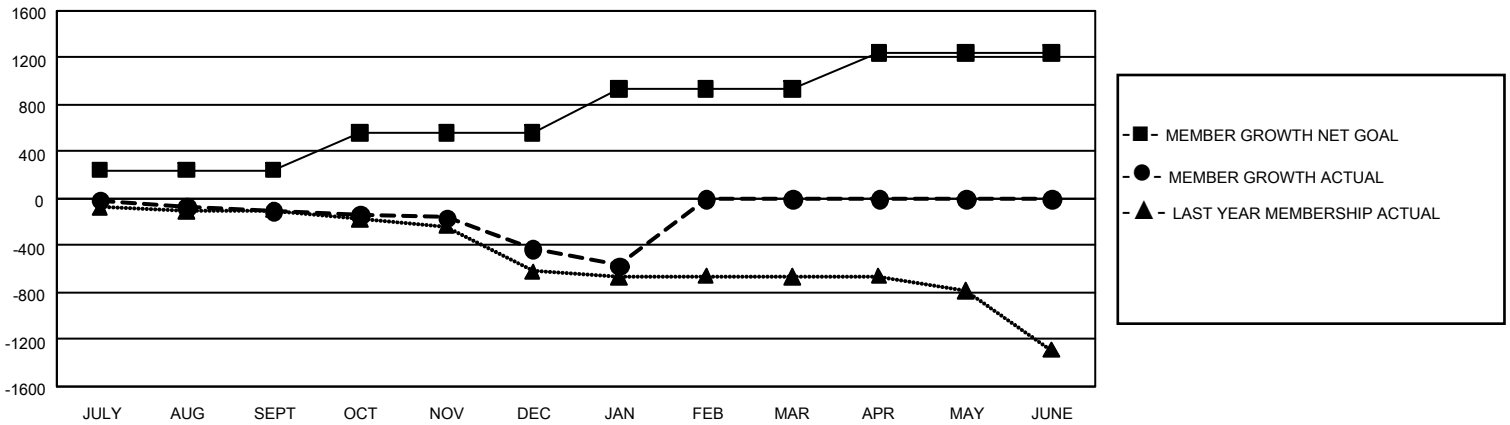
REPORT DOES NOT INCLUDE CLUBS IN UNDISTRICTED AREAS.

| Clubs | | | | Members | | | |
|-----------------------|---------------|-----------|---------------|-----------------------|------------------------|----------------------|--|
| RESULTS FOR 2020-2021 | | | | RESULTS FOR 2020-2021 | | | |
| QUARTER | NEW CLUB GOAL | NEW CLUBS | DROPPED CLUBS | QUARTER | MEMBER GROWTH NET GOAL | MEMBER GROWTH ACTUAL | DROPPED MEMBERS ACTUAL (including transfers) |
| JULY/AUG/SEPT | 18 | 3 | 6 | JULY/AUG/SEPT | 241 | 533 | 573 |
| OCT/NOV/DEC | 30 | 6 | 5 | OCT/NOV/DEC | 318 | 578 | 853 |
| JAN/FEB/MAR | 36 | 0 | 4 | JAN/FEB/MAR | 373 | 72 | 200 |
| APR/MAY/JUNE | 39 | 0 | 0 | APR/MAY/JUNE | 312 | 0 | 0 |

GOALS AND ACTUAL NEW CLUBS CUMULATIVE



GOALS AND ACTUAL MEMBERS CUMULATIVE



| | | | |
|------------------------|--|---------------------------------------|-----------------|
| DROPPED CLUBS: 15 | 307 CLUBS OF 1,102 ADDED 1 OR MORE NEW MEMBERS | <u>GENDER DISTRIBUTION</u> | |
| <u>DROPPED MEMBERS</u> | | MALE | 18,676 (68.84%) |
| DECEASED | 344 | FEMALE | 8,452 (31.16%) |
| CLUB CANCELLED | 89 | TOTAL FAMILY UNIT MEMBERS 5,478 | |
| OTHER | 1,193 | FAMILY MEMBERS PAYING HALF DUES 2,814 | |
| TOTAL | 1,626 | | |

[CLICK HERE FOR CUMULATIVE MEMBERSHIP DATA](#)